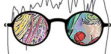




(410) 916-2175



**JessMessin' // Jess! Pfohl**

PfohlJL@gmail.com



JessMessin.com

### ***Cut Canvas***

Artist: Jess! Pfohl

The Alchemy of Art  
The Black Room  
1637 Eastern Ave.  
Baltimore, MD 21231

**BALTIMORE** - Jess! Pfohl presents her latest creative works, *Cut Canvas*, during the month of July in The Black Room at the Alchemy of Art, Baltimore.

*Cut Canvas* is a mixed-media on layered canvas display. Jess! combines elements of study from the past year, to create multi dimensional inverted wall pieces that explore a combination of literal meaning with feminine qualities and characteristics resulting in strong imagery.

The artist hopes to reflect empowerment without being overpowering.

Jess! creates the works by using recycled printed canvases. Painting the backside in various colored layers; the canvas takes on a screen-printed feel. Second layers are painted on the same material in street art, pop art influences. All pieces are hand cut to shape and sewn using a traditional sewing machine. By allowing the material to dictate direction, the artist bends pieces to shape to create dimension so layers protrude from the canvas. The pieces are then stretched atop detailed frames, to create an inverted finished feel.

The collection shows 20 pieces. The exhibition is separated into categories to reflect fine art in commercial art settings, floral and Baltimore inspired.

Art Work Cost Price: \$-\$\$\$

**Opening Reception: Thursday, July 6, 2017 7p-11p – Free Entry, BYOB**